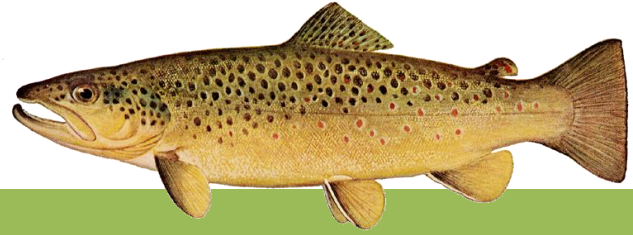


CT DEEP **2017**
FISHING REPORT NUMBER 1
4/13/2017



Brown Trout (*Salmo trutta*)



YOU CAN FIND US DIRECTLY ON FACEBOOK. This page features a variety of information on fishing, hunting, and wildlife watching in Connecticut. The address is www.facebook.com/CTFishandWildlife.



INLAND REPORT

OPENING DAY – The cool, breezy morning, cold water temperatures and fairly high flows on Opening Day meant a slow start to the trout season for many anglers. Eight of the eleven Trout Parks were stocked on Opening Day and the many kids present enjoyed helping us stock.

Approximately 306,000 trout were stocked before Opening Day into nearly 100 lakes and ponds and over 120 rivers and streams located throughout Connecticut. DEEP's in-season stockings are now underway with over 220,000 additional trout scheduled to be stocked between Opening Day and the end of May.

TROUT- RIVERS & STREAMS - Conditions should be good for trout fishing in most areas this weekend. Flows were on the high side for Opening Day but are now settling back to typical spring levels (*see stream flow graphic on page 4*), generally comfortable weather (but with a few showers) is forecast, and there are plenty of recently stocked trout waiting for anglers. As water temperatures warm, fishing should improve from Opening Day's cool start.

Generally mixed reports for Opening Day fishing with some anglers quickly getting their limit and others really having to work for their catches. With the cool weather and high flows, being willing to try different locations was helpful. Reports include the Yantic River (fair to good for those starting early), West River (some fish caught but generally slow), Mount Hope River (fair action with some five-fish limits at some locations, but fast flows really slowed fishing at the more downstream sites), Scantic River (slow for many, but those willing to move to alternative locations fared much better), West Branch Farmington River (very mixed results), Still River (Danbury, fair to good fishing), East Aspetuck River (tough for many, but some experienced anglers found some fair action), Norwalk River (anglers had to work a bit harder to catch fish, anglers were catching mostly rainbows), Quinipiac River (fair action for those willing to move around to different spots), Mill River (Fairfield, fair to good action), Pachaug River (slow day), Salmon River (fair action on Opening day, but much better fishing on Monday, especially in the evening) and the Hammonasset River (slow early, fair later in the day, with good action the next morning).

Farmington River - Opening Day trout fishing was mostly fair to good above the Still River, but tougher farther downstream due to higher flows. The Riverton Derby winner was a 10 lb, 13 oz Rainbow Trout caught by Matthew Musumano. West Branch flows are now clear, and somewhat on the high side, currently 411 cfs at Riverton plus an additional 211 cfs from the Still River. Conditions should be fair for the upcoming weekend with comfortable weather forecast and moderately high flows. Anglers will have to work some for their fish.

Typical mid-April hatches/patterns include Blue Wing Olive, Hendrickson (will appear mid-April when it warms up a bit), Winter/Summer Caddis, Stonefly nymphs, Midge and Blue Quill. Nymphs (#18-22) are always a good

go-to fly, try Bead Head, Midge Pupa, Brassie, Zebra Midge or Copper John patterns. Streamers are also a good option (White Zonkers & Buggers (#4-12) as well as Muddlers, Micky Finn, Grey or Black Ghost).

Housatonic River - Conditions for the weekend will be fair. Comfortable weather is forecast but flows have been high and difficult/dangerous to wade in many areas (but slowly dropping to more fishable levels). Currently flows are “stained”, and high (currently 2,170 cfs at Falls Village and 3,280 cfs at Gaylordsville, both above typical late-April levels). Morning water temperatures are currently in the mid 50’s °F.

Hatches/patterns. Typical patterns for mid-April include March Brown (#10-12), Pheasant Tail (#12-18), Stoneflies (#6-10), Pheasant Tails (#14-20), and Black Stoneflies (#18-22). Look for Hendriksons soon. Nymphing (try Bead Head, Midge Pupa or Copper Johns) and streamers (such as White/Yellow Zonkers or Woolly Buggers) are good options.

Rivers and streams stocking update (Note that all stocking schedules are subject to change):

In **eastern Connecticut**; the **Salmon River (including the TMA)**, **Natchaug River**, **Hammonasset River (including the TMA)**, **Shetucket River** and the **Willimantic River TMA**.

In **western Connecticut**; **Farmington River TMA** (from the lower Collinsville dam to the Route 177 bridge), **Mianus River TMA**, **Saugatuck River TMA**, **Naugatuck River TMA**, **Mill River (Hamden, including the Sleeping Giant TMA)** **Mill River (Fairfield, outside of the TMA)**, the **Farmington River TMA** (from the lower end of the year-round catch-and-release area at Route 219 to the lower Collinsville dam), and the **Norwalk River**.

TROUT-LAKES & PONDS - The cool, breezy Opening Day morning may have kept some anglers off the lakes and slowed fishing. Reports are from Quonnipaug Lake (slow), Beach Pond (slow), Amos Lake (slow to fair), Millers Pond (slow), Branford Suply ponds (slow), Cedar Lake (fair action early in the day), Highland Lake (slow morning, better later in the day), Candlewood Lake (not that many catches for trout anglers, but some bass anglers were finding trout when fishing shallower waters), Saugatuck Reservoir (fair to good, catches included a 6.1 lb brown trout), Squantz Pond (slow), and West Hill Pond (slow to fair action for “stockies”, but bigger fish were biting better).

Lakes and ponds stocking update (Note that all stocking schedules are subject to change):

In **western Connecticut**; **Black Rock Lake** (flood control impoundment), **Mount Tom Pond** and **West Hill Pond**.

TROUT PARKS – Fishing ranged from fair to very good at the Trout Parks with good reports from Mohegan Park Pond, Southford Falls, Wolfe Park, fair to good at Chatfield Hollow (bite got better as they went on Stratton Brook and Valley Falls Park Pond, and fair at Black Rock. All eleven Trout Parks were stocked prior to Opening Day. Eight of the Trout Parks, Black Rock Pond, Chatfield Hollow, Mohegan Park Pond, Southford Falls, Stratton Brook, Valley Falls Park Pond, Wharton Brook, and Wolfe Park (Great Hollow Pond), were stocked again on Opening Day. The **Natchaug River**, **Day Pond**, **Mohegan Park Pond**, **Chatfield Hollow** and **Valley Falls Park Pond Trout Parks** (Schreeder pond only) were stocked this week.

COMMUNITY FISHING WATERS- **Lake Wintergreen** was stocked this week.

NEW INTERACTIVE TROUT STOCKING MAP NOW AVAILABLE.

Anglers can find more information on trout stocking online. A list of the waters that were dropped from this year’s stocking schedule is on our webpage at: www.ct.gov/deep/fishing, along with an interactive trout stocking map (www.ct.gov/deep/troutstockingmaps) that anglers should find very useful for planning their next outing. The new application (mobile friendly) provides the number of days since the last stocking at each of our stocked waters enabling anglers to search for their favorite waterbody or by that have been recently stocked.

**ZEBRA MUSSELS REMINDER**

Zebra mussels are now found in a number of locations scattered throughout the Housatonic River and its impoundments including Lake Lillinonah (since 2010), Lake Zoar (since 2010) and Lake Housatonic (since 2011).

Prior to their discovery in Lakes Lillinonah and Zoar in 2010, zebra mussels had been found (1998) in CT only in East Twin Lake and West Twin Lake (Salisbury). Anglers fishing in any of these waters and western Connecticut in general **should use extra care to avoid transporting water, aquatic vegetation, and possibly zebra mussels to new locations.** Information

For more information including precautions that should be taken to prevent the spread of zebra mussels to additional waters, visit www.ct.gov/deep/invasivespecies or the Aquatic Invasive species section of the 2017 CT angler's Guide(www.ct.gov/deep/anglersguide).

LARGEMOUTH BASS fishing is generally slow in many areas, but action should begin to pick up as water temperatures warm. Targeting dark bottom warmer back water coves is suggested for some action. Slow to fair reports from Moodus Reservoir (some action on smaller bass), Highland Lake (better later in the day), East Twin Lake (slow), Candlewood Lake (on the slow side, some found in shallow, jerk baits are having some success), and Lake Quonnipaug (slow). **Tournament angler** reports are from Aspinook Pond (slow, with a 1.8 lb lunker) and Pattagansett Lake (slow for most, with a 4.65 lb lunker).

SMALLMOUTH BASS. Some smallmouth are being caught at Candlewood Lake (you have to work hard to get them to bite, look in 18 -25 feet of water using Hair Jigs) and Highland Lake. **Tournament angler** reports are from Aspinook Pond (slow to fair, with a 2.9 lb lunker).

CONNECTICUT RIVER

The river is currently cold, turbid and high, continuing to higher than typical mid-April level and difficult to boat or fish. Although the river isn't warm enough, a few **AMERICAN SHAD** are showing up in the far lower river.

NOTES & NOTICES:

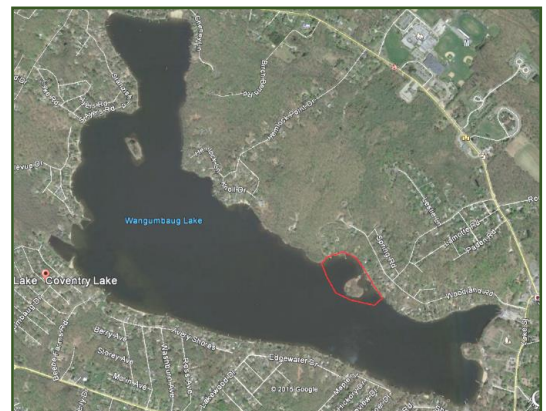
DRAWDOWN UPDATES – BASHAN LAKE, and **DOOLEY POND** have refilled and the state boat launches on these two lakes are open to use. **HANOVER POND** has also refilled.

BRANFORD RIVER (boat launch). The Branford River state boat launch continues to be closed for renovations. Alternative nearby launch sites include the Guilford Town boat launch and the East River State boat launch, both in Guilford.

CONNECTICUT RIVER (invasive species alert). Hydrilla was recently found in the main stem Connecticut River in Glastonbury (near Glastonbury's Riverfront Park & Boathouse). See the Coventry Lake entry below for what river users should do to prevent spread of this invasive plant to other waterbodies.

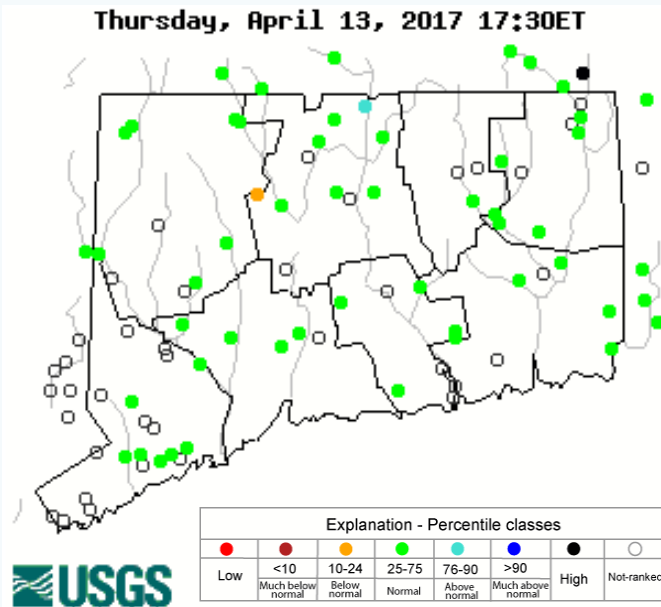
COVENTRY LAKE (invasive species alert). Hydrilla, a very highly invasive aquatic plant, has been found growing in Coventry Lake. All lake users should take extra care to check and clean their boats (including canoes, kayaks and rowing sculls), trailers, and fishing equipment before leaving the boat launch, or leaving the lakeshore.

Coventry Lake (Wangumbaug Lake) boaters should avoid the area outlined in red to avoid fragmenting and spreading hydrilla. This is only area in the lake where hydrilla has been found.



GLASGO POND (drawdown). Glasgo Pond is currently drawn down approximately 4 feet to facilitate dam modifications.

Stream flow conditions as of 4/13/2017



Data in the state graphic to the left are generated by the United States Geologic Survey (USGS) and are available on line at: <http://waterdata.usgs.gov/ct/nwis/rt>

A percentile is a value on a scale of one hundred that indicates the percent of data in the data set equal to or below it. For example streamflow greater than the 75th percentile means only ¼ of the streamflow values were above the value and thus would be considered “above normal”. Stream flow between the 25th and 50th are considered to be “normal flows” and those 25th or less are considered to be “below normal”.

MARINE FISHING REPORT

For those looking for a Marine Fishing Report, they will resume next week.

The Connecticut Department of Energy and Environmental Protection is an Affirmative Action/Equal Opportunity Employer that is committed to complying with the requirements of the Americans with Disabilities Act. Please contact us at (860) 418-5910 or deep.accommodations@ct.gov if you have a disability and need a communication aid or service; have limited proficiency in English and may need information in another language; or if you wish to file an ADA or Title VI discrimination complaint.

DEEP WEEKLY Fishing Report



**Connecticut Department of
ENERGY & ENVIRONMENTAL PROTECTION**

79 Elm Street, Hartford, CT 06106
www.ct.gov/deep